

第一宿舍簡介

- ▶ 住宿費用(含水電費、冷氣費、網路費)：
 - 身心障礙生及陪住者：13,120 元/學期。
 - 研究生：13,620元/學期。
- ▶ 門禁時間：每晚12時關閉，次晨5時30分開啟。
- ▶ 點名時間：週一至週四晚上12時點名。
- ▶ 燈禁時間：凌晨12時30分熄大燈，仍可使用書桌檯燈；考試週凌晨1時30分熄大燈。

First Dorm Introduction

- ▶ Fees(Water Supplying, Air Condition,Network)
 - Physical and mental disorders and companions : 13,120 NTD/SEM ◦
 - Postgraduate : 13,620 NTD/SEM ◦
- ▶ Curfew : From 12a.m–Until 5a.m ◦
- ▶ Nomination time: Monday to Thursday at 12A.M.
- ▶ Lights forbidden time: General dormitory room:
Turn off the headlights at 12:30am. You can still use the desk lamp. Turn off the headlights at 1.30am on the examination week. Sleep early in the bedroom: Turn off the headlights at 12am.

- ▶ 網路設備：每間寢室含有線網路10M/人、無線網路5M/寢室。
- ▶ 冷氣供應時間：日間為11:30至13:30、夜間18:30至凌晨2:00。(夏季及冬季視氣溫調整供應時間)
- ▶ 熱水供應時間：17:30起至24:00止。
- ▶ 寢室配備：
 - 床(自備床墊193×96cm)、書桌椅、衣櫃。
 - 獨立衛浴。
 - 自備的電腦螢幕尺寸不受限制。

- ▶ Network Facilities : Each bedroom contains 10M/person of line network, 5M/room of wireless network).
- ▶ Air-conditioning hours: 11:30 to 13:30 during the day and 18:30 to 2:00 in the evening. (Summer and winter depending on the temperature adjustment supply time)
- ▶ Hot water supply time: from 17:30 to 24:00. °
- ▶ Bedroom Facilities :
 1. Bed (comes with mattress 193x96cm), desk chair, wardrobe.
 2. independent bathroom
 3. Self-contained computer screen size is not limited

第一宿舍身心障礙套房照片

寢室號碼：

男生房號：1101~1106；1010~1113，共
10間寢室。

女生房號：1117~1122；1126~1129，共
10間寢室。

Disability Suite Photo

Bedrooms Number :

Male : 1101~1106 ; 1010~1113 ,

Total 10 Bedrooms ◦

Female : 1117~1122 ; 1126~1129 ,

Total 10 Bedrooms ◦



靠窗

By the window

靠門

By the Door



長榮大學

長榮大學







Graduate Suite(Type 1)



靠窗

By the window

靠門

By the Door



長榮大學


長榮大學





Graduate Suite(Type 2)

- ▶ Female : 1233-1236 , Total 4 Rooms ◦

A photograph of a bedroom with light-colored walls and tiled floors. On the left, there is a white bed with a matching dresser. In the center, another white bed is positioned against the wall. To the right, there is a desk with a chair and a window with light-colored curtains. An air conditioner is mounted on the wall above the window. A ceiling light fixture is visible at the top.

靠窗

By the window

靠門

By the door



長榮大學

長榮大學





Other



洗衣間：洗衣機、烘衣機、脫水機
Laundry room



交誼廳
Lounge



全家 FamilyMart

第一宿舍全家超商
Family Mart



7-11 (Market)



三、四宿舍地下美食街 Canteen (Food Street)



ATM 第一銀行 First Bank

第一宿舍學生管理員室

今日A/B樂遊一夏 6點30開演
漫畫圍城 玻璃便當盒/折疊桌椅



一、二宿停車場
First and Sec Dorm
Parking Lot

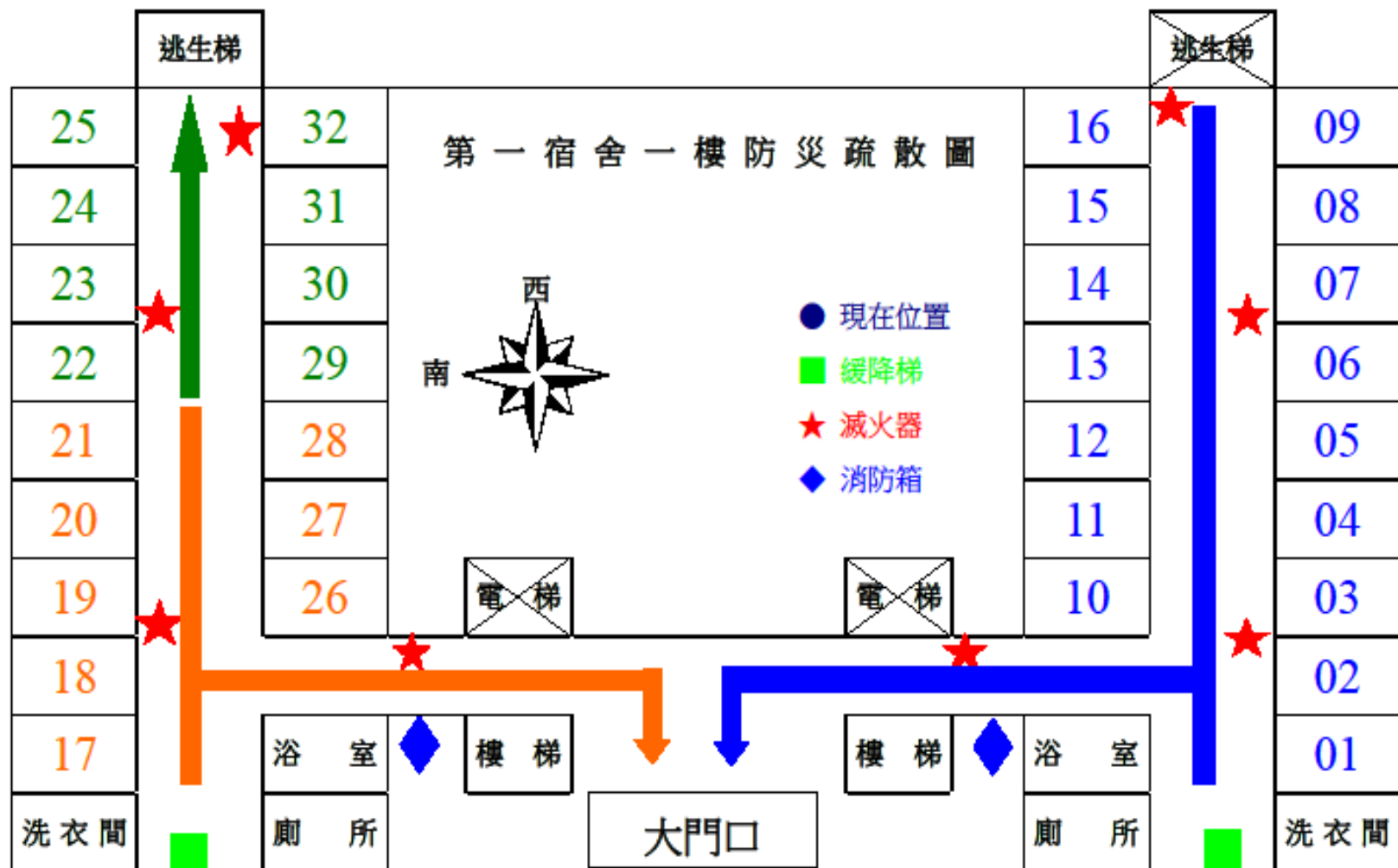
9 1:59PM

The image shows the interior of a clothes-drying room. The walls are constructed from a dark metal frame with a grid of circular perforations. The floor is also made of a similar perforated metal. The room is brightly lit, with light streaming through the holes in the walls and floor. The ceiling is a plain, light-colored surface. The overall appearance is industrial and functional.

曬衣間
Clothes Dying-room

宿舍平面圖

Dormitory Plan



集結地點：大草原（足球場）



集結地點：大草原（足球場）